

# DID YOU KNOW?

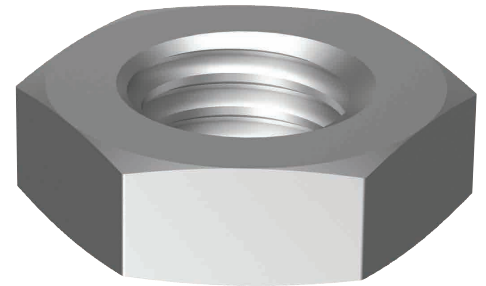
about our... **Thin Hex Nut - Brass Nickel Plated**



**NEW  
PRODUCT**

## THIN HEX NUT ISO 4035 / BRASS NICKEL PLATED

Part	Dia	Pitch	Height	Pack
	Ø	(mm)	min (mm)	Qty
NLBRNCM05	M5	0.8	2.45	200

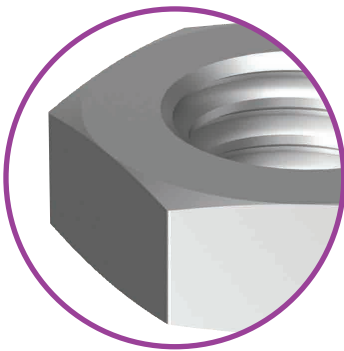


### About

Brass thin nuts are also referred to as lock or jam nuts. The correct use of a thin nut is to install it under the larger nut. The thin nut deforms and creates a locking action on the thread as the larger nut is tightened. Therefore the thin nut is more effective when it is soft.

### Applications

- » Electrical equipment and connections
- » Lighting
- » Automotive
- » Marine



### Features of Brass

- Durability
- Can withstand high temperature
- Malleable
- Corrosion resistant
- Non sparking
- Non magnetic
- Fire resistance
- High electrical conductivity

Bolt Tension | Anti-Vibration | Product Reliability | Traceability

**hobson.com.au** **QUALITY FASTENERS SINCE 1935**

